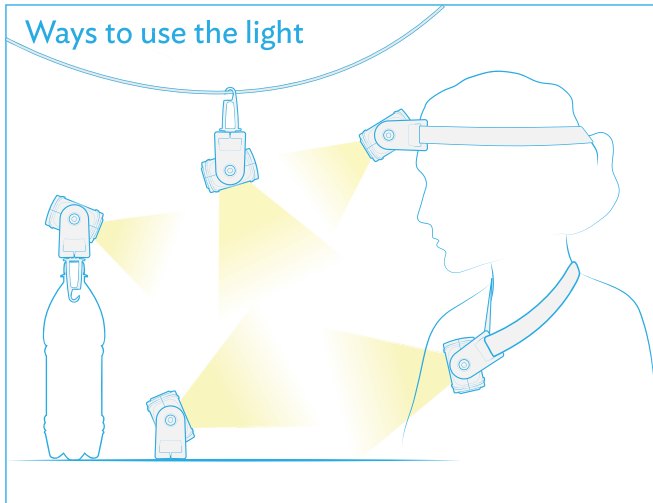


Ways to use the light



Manufactured in China for:
Laerdal Medical AS
Tanke Svilandsgate 30
P.O. Box 377
N-4002 Stavanger, Norway
Phone: +47 51 51 17 00
www.laerdal.no

Distributed in USA by:
Laerdal Medical
Laerdal Sales Office
167 Myers Corners Rd.
Wappingers Falls, NY 12590
Phone: +1 877 523 7325
www.laerdal.com

CE

The product is in compliance with the essential requirements of Council Directive 2004/108/EC on electromagnetic compatibility (EMC). The product is in compliance with Council Directive 2011/65/EU on restriction of the use of certain hazardous substances (RoHS).



Dispose in accordance with local regulations and requirements



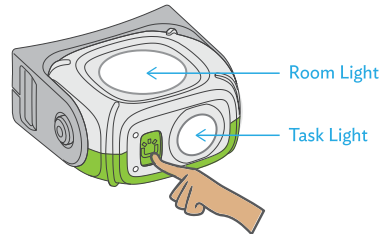
Laerdal
helping save lives

Product Configuration **Cat. No**
Laerdal Light w/AC adapter 500-00033
Laerdal Light w/solar panel 500-00133
Solar panel for Laerdal Light 500-00233



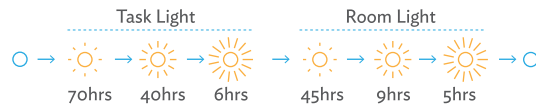
www.laerdalglobalhealth.com

To use

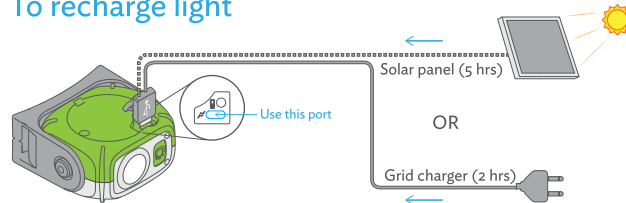


Press button to change brightness and mode

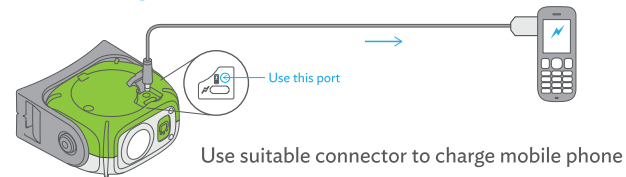
Shine Durations



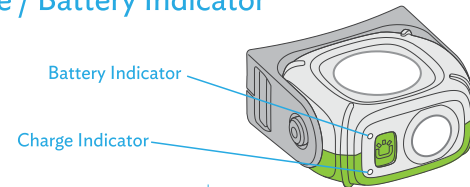
To recharge light



To recharge mobile phone



Charge / Battery Indicator

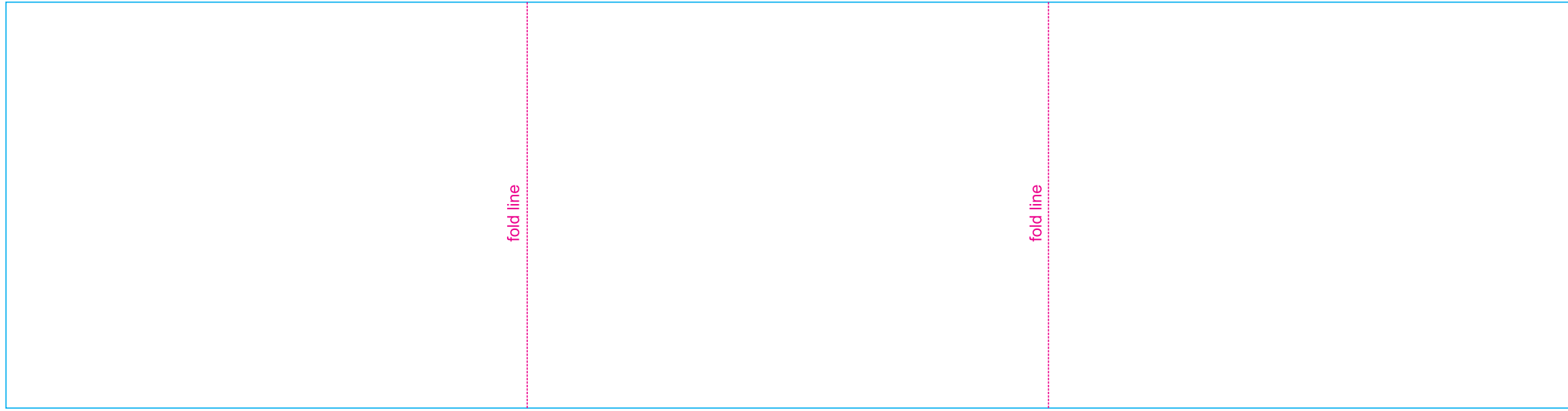


Indicator	Status
Charging	● Green Blinking Charging in progress
	● Green Solid Fully charged
Battery	● Red Blinking Low battery

To clean

Light casing : Wipe with cloth with 0.5% chlorine solution.
Rinse with cloth with clean water and dry.

Headband : Wash in soapy water and dry.



fold line

fold line