

Legacy to LLEAP

Pre LLEAP Implementation Questionnaire

(Please fill in your customer name and contact information below)

Customer/Organization:

Consulting

Education

Support



Laerdal

helping save lives

Pre LLEAP Implementation Questionnaire

The purpose of this document is to determine based on your current legacy products and systems, what the Legacy to LLEAP Implementation will include in terms of components and if a Site Survey should be scheduled prior the LLEAP Implementation. Some of the questions in this document might require an IT representative at your site.

Legacy to LLEAP Implementation includes:

- Laerdal mapping Legacy hardware and systems;
- Laerdal providing a quote for the Legacy products to be implemented into LLEAP
 - The quote will depend on the hardware, its compatibility with LLEAP and the size of the lab (numbers of manikins and debriefing systems)
 - The quote may include a Laerdal Field Service Engineer ("FSE") coming to your site to perform all aspects of the LLEAP Implementation
- A post-implementation, basic introduction to the LLEAP user interface, given by the FSE

PLEASE NOTE: SOFTWARE AND HARDWARE COMPATILBILITY LIMITATIONS

1. LLEAP software is incompatible with:

- Windows XP, Vista or earlier Microsoft operating systems
- Onyx patient monitor
- AVS debriefing system
- Enterprise configurations
- Apple computer hardware

2. LLEAP Software is incompatible with some 3rd Party PC's (not supported by Laerdal) that do not meet technical specifications. For a complete list compatible PC's and PC technical specifications see

<http://www.laerdal.com/us/LLEAPImplementation>

3. Using non-Laerdal software together with LLEAP software on your PC, even if it meets technical requirements, may cause your computer software to malfunction.

Repair or correction of these malfunctions are the responsibility of customer. Laerdal simulator warranty does not cover additional service-related expenses to repair or resolve these malfunctions.

Please initial and date that you have read and understand this statement





INITIALS _____ *DATE* _____

Pre LLEAP Implementation Questionnaire

Please complete this questionnaire in as much detail as possible. Doing so will allow Laerdal to provide you the best possible evaluation and implementation recommendation.

Legacy manikins & hardware in your lab

- A. What Laerdal manikins/systems are currently in your lab that need to be updated to LLEAP?
(Please do not list manikins that are already running with LLEAP)

Product name	Qty	VitalSim Configuration	SimPad Configuration	Connected to a PC with:		Adapter cable required (for internal use only)
				USB	COM (RS232)	
						
SimMan 3G		N/A	N/A	N/A	N/A	N/A
SimMan Essential		N/A	N/A	N/A	N/A	N/A
SimMan Essential Bleeding		N/A	N/A	N/A	N/A	N/A
SimMan 3G Trauma		N/A	N/A	N/A	N/A	N/A
SimMan 3G Mystic		N/A	N/A	N/A	N/A	N/A
SimMom wo/ADM		N/A	N/A	N/A	N/A	
SimMom w/ADM		N/A	N/A	N/A	N/A	
SimNewB				N/A	N/A	
SimJunior				N/A	N/A	
ALS Simulator				N/A	N/A	
SimBaby*		N/A	N/A			
SimMan*		N/A	N/A			



Important:

*For SimBaby and SimMan Classic the following adapters may be needed for LLEAP;

- USB to Com adapter (Cat. No. **400-20250** 10cm or **400-20150** 5mtr)
- SpO2 to USB Adapter (Cat. No. **212-17055**)

**Any SimPad connected to a Simulated Patient Monitor, LLEAP or SimView, needs to be updated to SW 5.7 or higher.

- B. Do you have other SimPad manikins or Task Trainers?***

Product name	Qty	VitalSim Configuration	SimPad Configuration
			
Nursing Anne, Nursing Kelly, MegaCode Kelly, Megacode Kid, Nursing Baby, Nursing Kid, RA Simulator, SimPad Task Trainers			

Pre LLEAP Implementation Questionnaire

C. How many SimView Servers do you have?

	Qty
SimView Server	

D. Please list the models and serial numbers of the PC's/Laptops used with the above manikins that you would like to run on LLEAP. Fill in as much information as possible for each PC:

Model name	Windows version	RAM	Serial #'s or other id nr if appl.	Qty	Was this computer purchased from Laerdal? If no, see section 5	LLEAP Compatible <i>(for internal use only)</i>
Instructor Computers						
Patient Monitors (including SimPad Patient Monitors)						
Debriefing PC's (any dedicated computers used for debriefing with Session Viewer, Debrief Viewer, etc.)						

All computers listed above will be checked to ensure they are compatible with LLEAP. Please refer to the compatibility matrix found here:

<http://www.laerdal.com/us/LLEAPImplementation>

Pre LLEAP Implementation Questionnaire

E. Have you installed any "non-Laerdal software" on any of the computers on your list?

Yes No

PLEASE NOTE: DO NOT INSTALL OTHER SOFTWARE ON LLEAP COMPUTERS

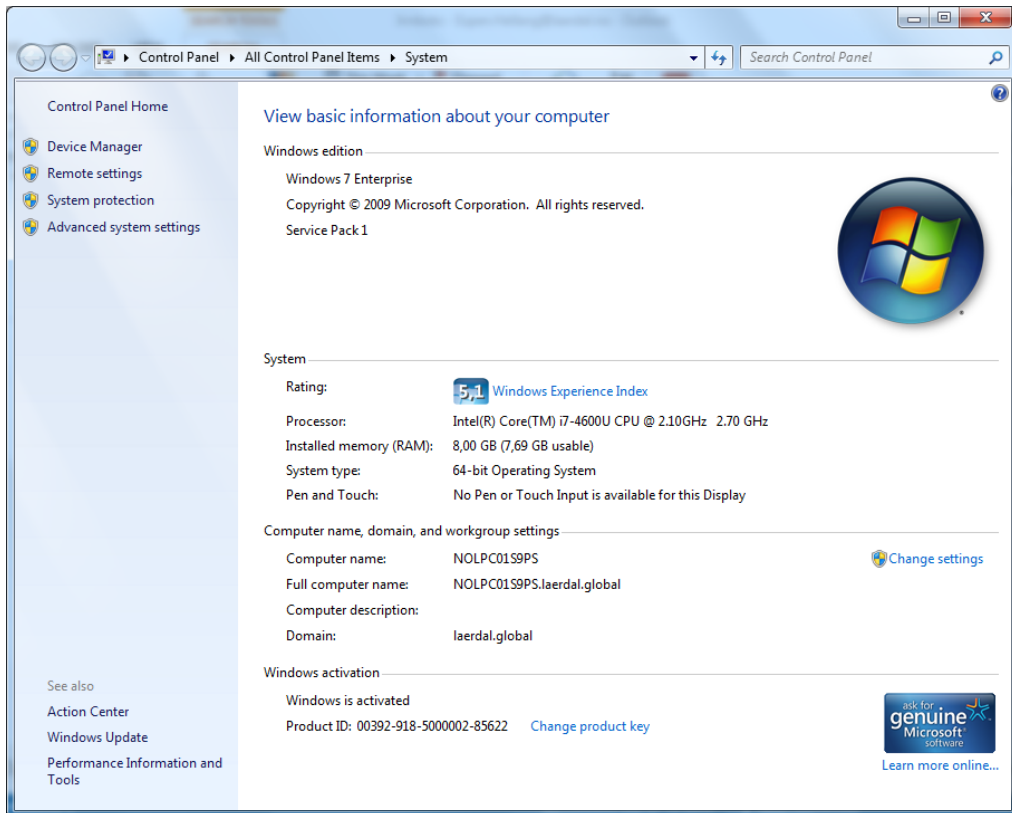
Only Laerdal software should be installed on LLEAP computers. Do not install non-Laerdal software on LLEAP computers.

Using non-Laerdal software together with LLEAP software may cause your computer or software to malfunction.

Repair or correction of these malfunctions are not included in Laerdal's regular warranty service and you may incur additional service-related expenses to repair or resolve these malfunctions.

If any of the computers you listed in section D are "3rd party PC's" (computers not supplied by Laerdal) please include a screen capture from each 3rd party computer showing the information listed under:

Control Panel → System and Security → System



Pre LLEAP Implementation Questionnaire

PLEASE NOTE: COMPUTERS PURCHASED FROM 3rd PARTIES

If purchasing computers from a 3rd party supplier, hardware and OS specs must be met exactly. Technical specifications are listed on the Laerdal website here:

<http://www.laerdal.com/us/LLEAPImplementation>

If further clarification is needed, please contact Laerdal Technical Support to help determine compatibility.

If the equipment purchased is incompatible, fails during installation or is not available during installation, Laerdal will not be held responsible. Repair or correction of these malfunctions are not included in Laerdal's regular warranty service and you may incur additional service-related expenses to repair or resolve these malfunctions. If the Laerdal FSE is required at your site to complete the implementation, an additional Service day will be charged.

Remember - Using non-Laerdal software together with LLEAP software on your 3rd party PC, even if it meets technical requirements, may cause your computer or software to malfunction.

- F. Are the existing computers networked? Yes No

If yes, please ensure your IT department is available when LLEAP implementation is scheduled.

Debriefing System:

Web camera:

- G. Do you use any USB web cameras to record the simulation session? Yes No
If yes, how many:
Please fill in the below information if you know the model and serial number of the cameras:

Model	Serial number

Audio:

- H. Do you use the SimView audio system:
I. Do you use a 3rd party audio system?

Other:

- J. What other Laerdal Product(s) will be used with the SimView System?
Please list all:

- K. How many debrief rooms do you stream the video to?

Pre LLEAP Implementation Questionnaire

If 3rd Party Debriefing System (Not all 3rd Party Debriefing Systems support LLEAP):

L. Do you use another Brand of external AV device, if so please identify the supplier:

- B-Line
- KB Port
- EMS
- SMOTS
- Nordic
- Other

If “other”, please describe the system you are using:

Laerdal will need detailed information of the 3rd party system at a later stage in the LLEAP Implementation process.

If you have an AVS system

Laerdal migrated to SimView in 2013 thus Laerdal AVS is not compatible with LLEAP. Incentive programs are available for customers that want to migrate to SimView.

M. Are you interested in converting to SimView?

Yes **No**

Scenarios

N. Do you have scenarios that need to be converted to LLEAP?

Yes **No**

If yes, please discuss and agree by whom and when the scenarios will be converted to LLEAP:

Are any of these scenarios Boxed Sets of scenarios?

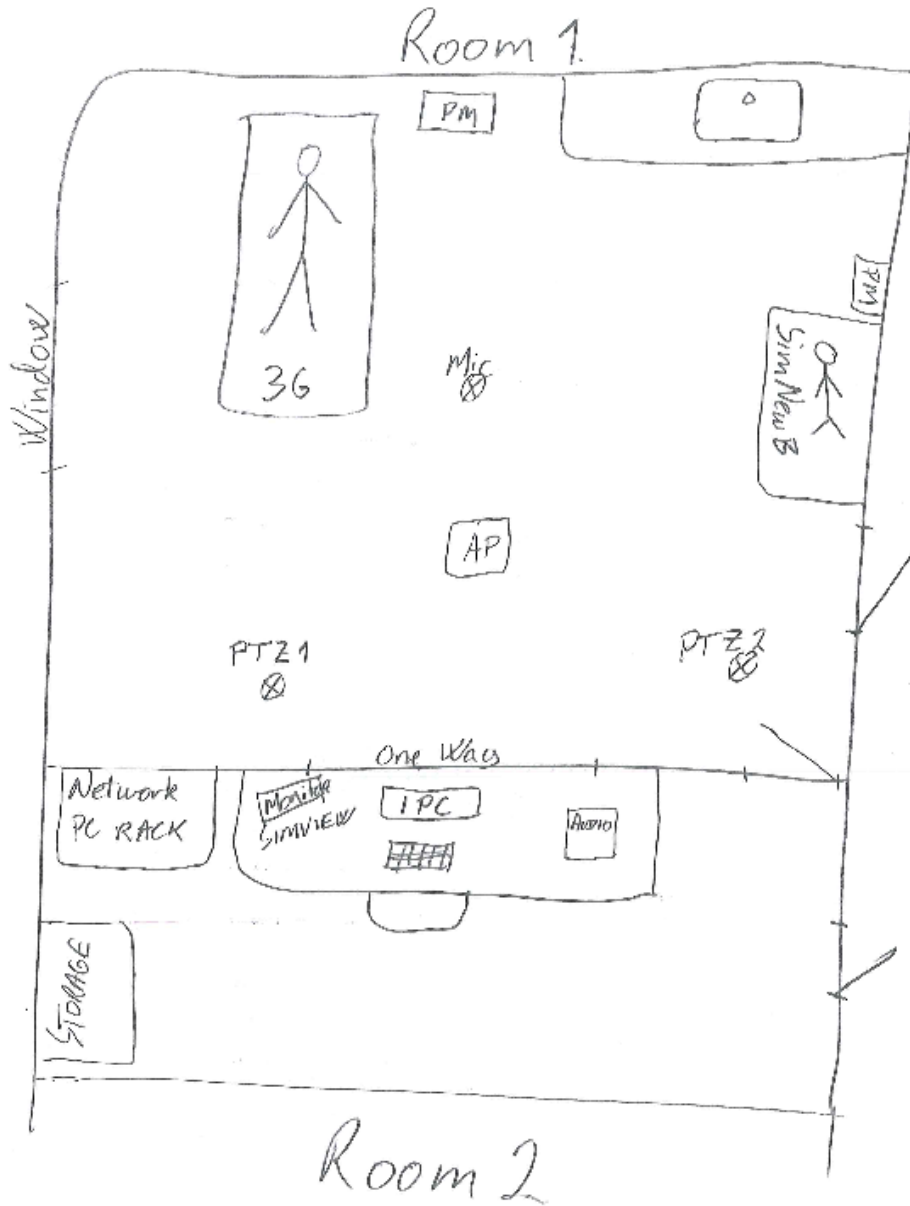
O. Do you have SimStore content?

If yes, who will reallocate these scenarios to your devices?

Pre LLEAP Implementation Questionnaire

Layout of the simulation lab

Below is a simplified example of the layout of a simulation lab. It will be very useful in the further preparations of the quoting and potential implementation if you could attach a similar overview of your lab.



Pre LLEAP Implementation Questionnaire

Summary

Based on the input to this form, your local Laerdal representative/FSE will decide if a Site Survey is needed prior the LLEAP Implementation.

If the need of a Site Survey is determined, a quote with the total cost of the LLEAP Implementation will be sent to you after the Site Survey is completed.

Please list any identified hardware and/or equipment needed to be able to implement LLEAP (for internal use only):

Hardware/ Equipment (cables, adapters, switches etc.):

Maintenance checkup

P. Are you interested in a Simulator maintenance checkup during the Site Survey? **Yes** **No**

Contact Information

Customer

Organization name: _____

Account no.: _____

Contact person Network Administrator: _____

Phone: _____

E-mail: _____

Contact person Site responsible: _____

Phone: _____

E-mail: _____

Address:

Name: _____

Street: _____

City: _____

Country: _____

Laerdal

Contact person Technical Services: _____

Phone: _____

E-mail: _____

Address:

Name: _____

Street: _____

City: _____

Country: _____

Working time

Service agreements will be performed during Laerdal Medical normal working hours:

Monday – Friday during normal business hours, excluding holidays.

www.laerdal.com

© Laerdal Medical AS. All rights reserved. Att I to 00027098 Rev G