

One disposable airway for

# Resusci Anne

24 pack Cat. No. 152250

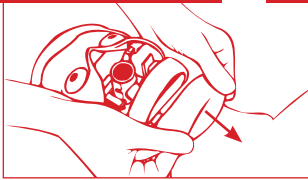
Made in P.R. China  
7287 rev E



**Laerdal**  
*helping save lives*

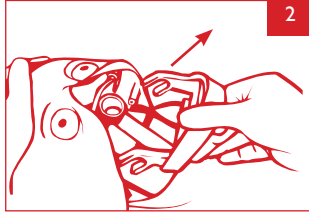
**Airway is designed for disposal after each class.**

**To remove the airway**



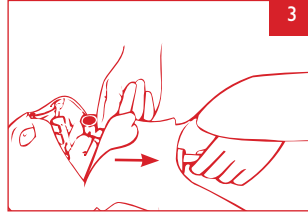
Having removed face, remove neck skin from chin.

2



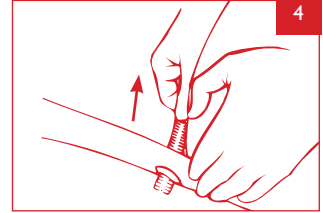
Pull to remove jaw.

3



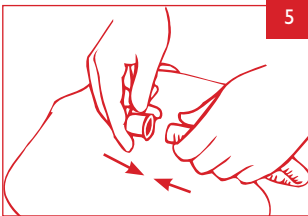
Detach airway connector and pull inspiration tube through the neck.

4



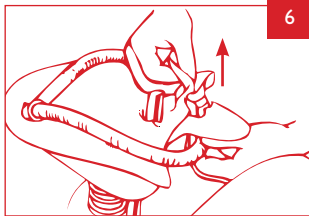
Pull expiration tube from its retainer in the manikin's side.

5



Connect expiration and inspiration tubes.

6



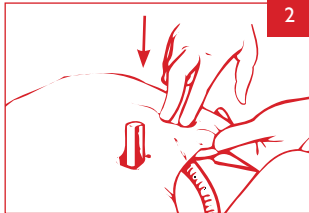
Slide tubing through slot in lung plate, to detach airway assembly. Discard used airway.

**To install the airway**



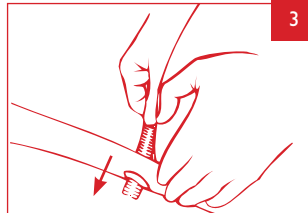
Slide tubing through slot in lung plate, with lung on top.

2



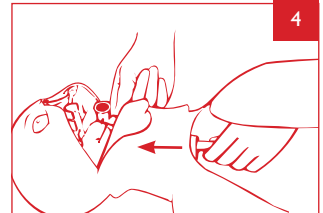
Push on lung connector until fully seated in lung plate. Make sure the ventilation slider can move freely.

3



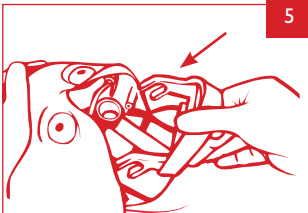
Push expiration tube into retainer in manikin's side until end protrudes about 2-3 cm (1").

4



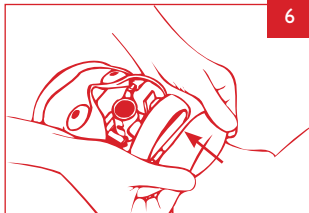
Push inspiration tube through neck and click airway connector into its holder.

5



Install jaw by sliding its forked portions over steering pins in the inner head.

6



Fold neck skin over jaw, and install face.