

SimPad with SimView Server

Quick Setup Guide



Introduction	4
Start SimView	5
Connect SimPad to SimView Server	6
Start a Simulation	8
Debriefing with SimView Server	10

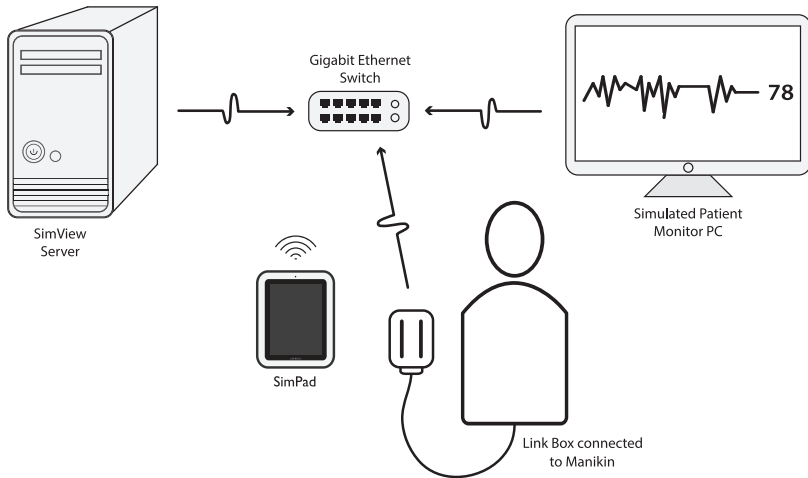
1

Introduction

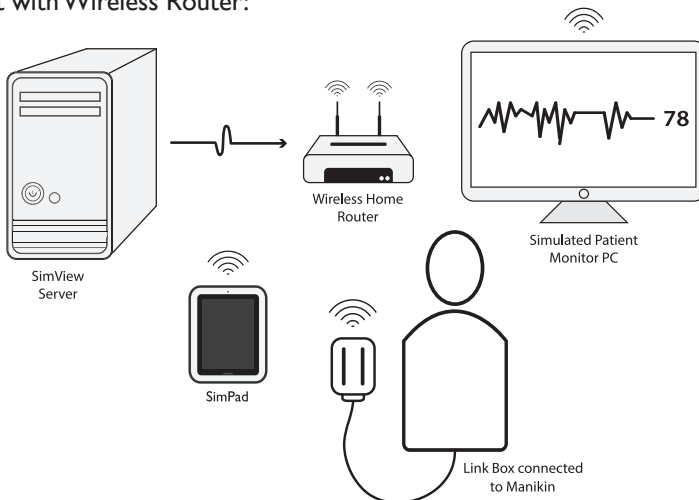
This Quick Setup Guide shows how to connect the SimPad to SimView server.

Ensure the SimPad and Link Box are turned on, and connected to the SimView network. For more information on connecting SimPad and Link Box refer to SimPad User Guide.

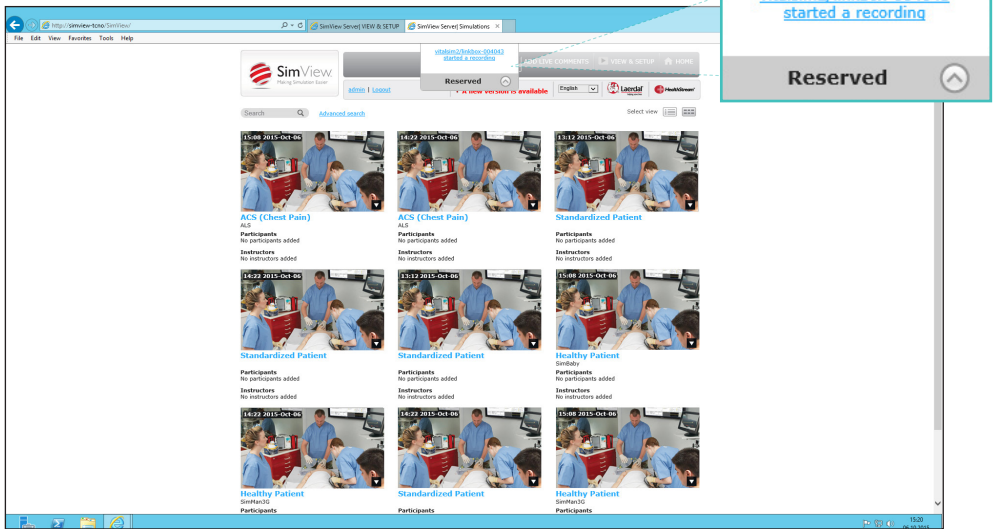
Connect with Ethernet Switch:



Connect with Wireless Router:



On the SimView screen make sure the correct SimPad/LinkBox is connected: on the top of the screen it will show “Reserved”.

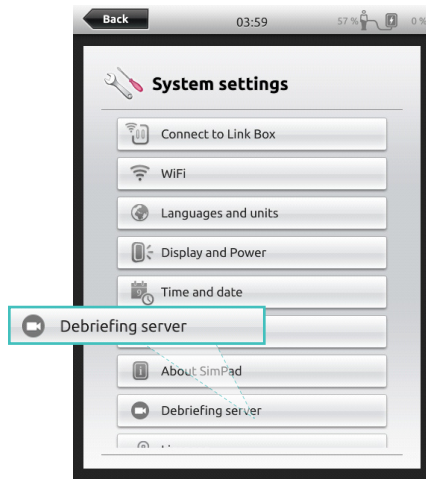


3

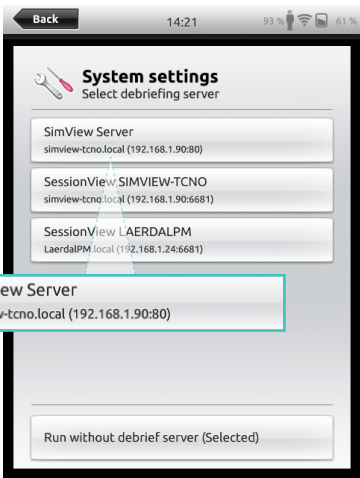
Connect to SimView Server



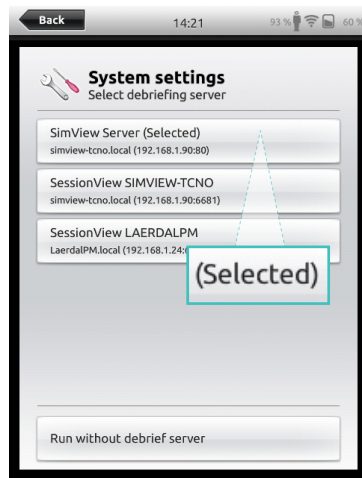
Go to System Settings on SimPad.



Then select 'Debriefing Server'



Select SimView Server from the list.



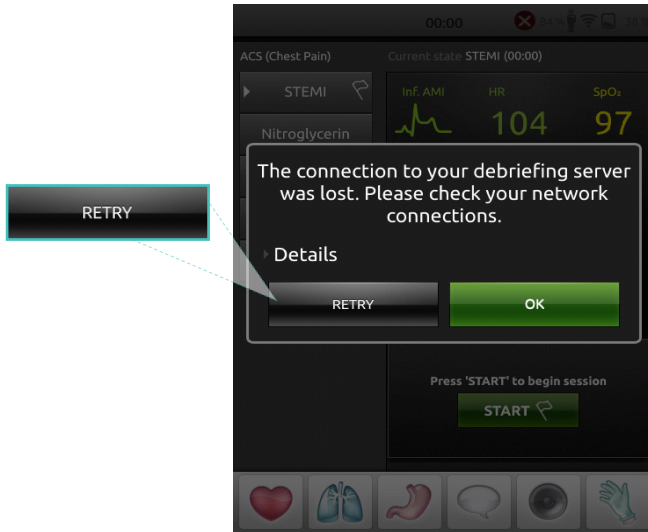
SimView Server will show that it is selected. Then go back to menu.



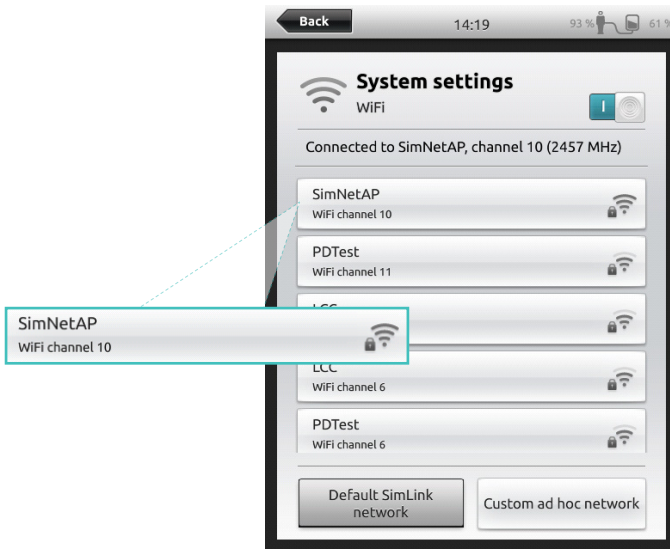
Note

The SimPad will automatically select the previous debriefing system used if it is available.

If the connection to the debriefing server is lost check your network connections then reconnect to SimView Server:



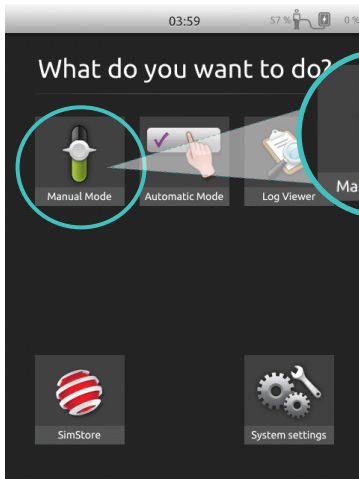
Double check you are connected to the right network by checking system settings.



4

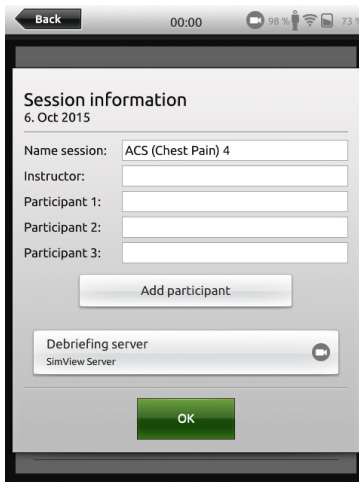
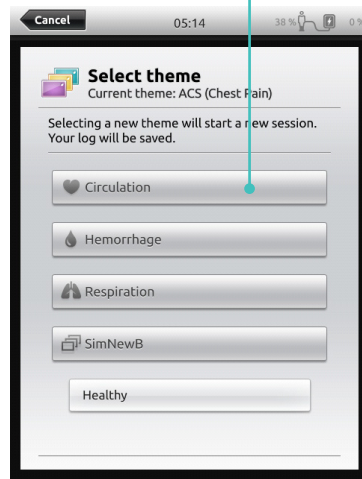
Start a Simulation

You can start, pause, resume, and stop the simulation from your SimPad.

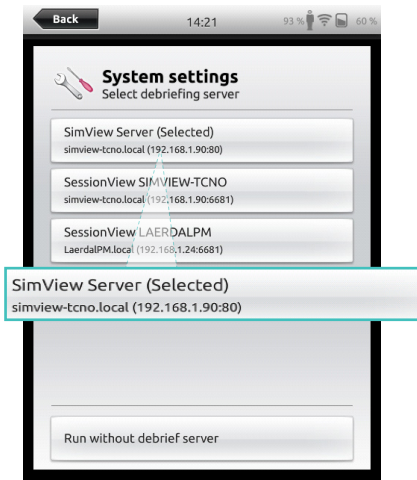


To start a simulation, tap Manual Mode or Automatic Mode.

Select any theme.



If no Debriefing Server is connected, or you wish to connect to another server, tap 'Debriefing Server' and select the correct server from the list.



The name of the selected server will appear. Tap 'back'.

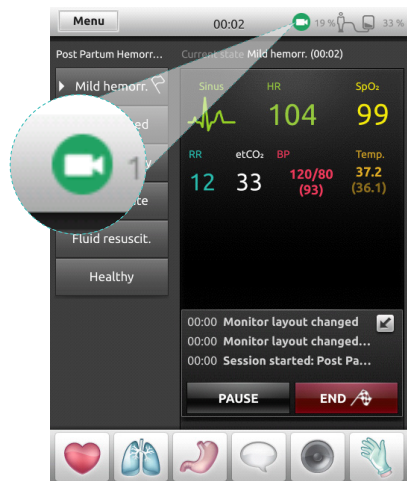


Your chosen SimView will appear as the Debriefing Server. Tap 'OK'.

SimPad is now connected to SimView Server



Tap "Start" to start your simulation session.



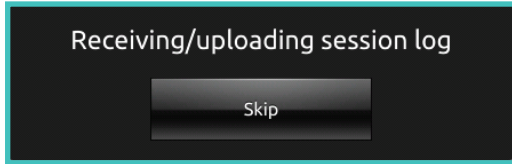
The SimView icon will turn green to show it is recording.

6

Debriefing with SimView

Debriefing

When you stop the Simulation the session will be uploaded.



On the SimPad you must select "View Log" to save the recorded session. From the home screen of the SimView Server select the appropriate session.

The screenshot displays the SimView web interface. On the left, there is a sidebar with 'Simulation Information' and 'Event Log' tabs. Under 'Basic Information', the session name is 'Healthy Patient' and the date is '13:59 2014-aug-26'. Below this is 'Course And Student Information' and 'Patient Description' with fields for Name, Sex, Age, Weight, Height, and Prior medical history. The main area shows a video feed of a medical procedure with overlaid vital signs: ECG Leads Off, SpO2 No Sensor, CO2 No Sensor, NBP No Cuff, HR, SpO2, etCO2, imCO2, awRR, and Tblood. A timeline at the bottom shows a 12:16 duration.

© 2015 Laerdal Medical AS. All rights reserved.

20-09651 Rev A

www.laerdal.com



Laerdal
helping save lives