



Laerdal-SonoSim Ultrasound Solution

Critical Care Bundle, RUSH Protocol

The Critical Care Bundle, RUSH Protocol is a set of 10 Critical Care Scenarios for use with LLEAP, extensive scenario support material, and accompanying hands-on ultrasound scanning cases designed to assess and train healthcare providers and senior medical students in critical care.

The Critical Care Bundle, RUSH Protocol is designed specifically for the Laerdal-SonoSim Ultrasound Solution, which integrates simulated diagnostic ultrasound capacity from SonoSim into the Laerdal patient simulator platform. The Laerdal-SonoSim Ultrasound Solution delivers realistic and challenging scenario-based simulations designed to promote proficient critical thinking and clinical decision-making skills. For participants, it provides the opportunity to practice a broad range of critical care skills in a challenging but risk-free environment.

The Laerdal-SonoSim Ultrasound Solution

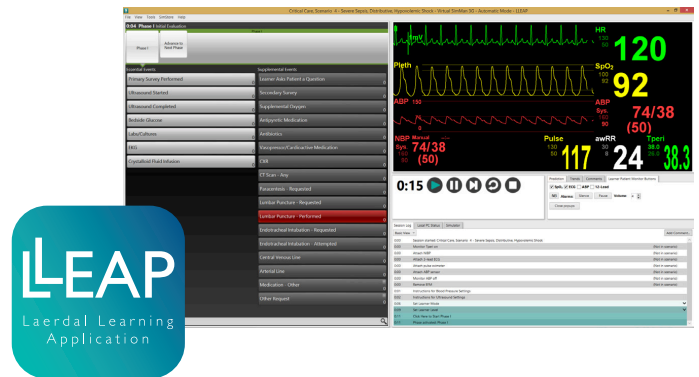
Critical Care Bundle, RUSH Protocol

Description

The Critical Care Scenarios are designed to assess a learner's ability to care for critically ill patients. Learners will need to perform primary and secondary trauma surveys, in addition to a Rapid Ultrasound in SHock (RUSH) examination. The Critical Care Bundle is structured around the RUSH protocol, so learners are expected to obtain and interpret 12 ultrasound imaging windows from real-patient cases for each Scenario. Consequently, learners are provided with substantial exposure to both normal and pathologic ultrasound images. Learners will need to develop an appropriate differential diagnosis, initiate timely resuscitative interventions, prioritize diagnostic interventions, order appropriate basic laboratory tests, and correctly acquire, interpret, and apply RUSH images towards medical decision-making. Participants must formulate a patient-care plan that effectively utilizes health-system resources and personnel, and ensures optimal patient outcomes.

Critical Care Scenarios

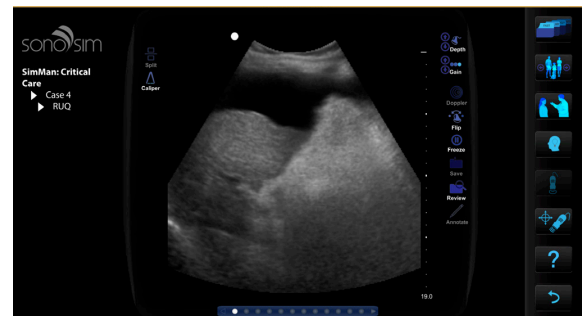
- Scenario 1: Moderate Hypothermia, Hypovolemic Shock
- Scenario 2: Severe Gastroenteritis, Hypovolemic Shock
- Scenario 3: Severe Sepsis, Deep Venous Thrombosis
- Scenario 4: Severe Sepsis, Distributive, Hypovolemic Shock
- Scenario 5: Acute Inhalational Injury, Blunt Trauma
- Scenario 6: Ruptured AAA, Hemorrhagic Shock
- Scenario 7: Severe Sepsis Complicated By Pericardial Effusion
- Scenario 8: Severe Sepsis, Pneumonia, Cardiomyopathy, IUP
- Scenario 9: Hemorrhagic Shock, Blunt Trauma
- Scenario 10: Pneumonia-Related Severe Sepsis



Ultrasound Findings

Significant ultrasound findings within the Critical Care Bundle include free fluid in the LUQ, RUQ, and Pelvis, a non-compressible right femoral vein thrombosis, an abdominal aortic aneurysm, a left-sided pneumothorax, B-line artifact in the left and right lungs, moderate pericardial effusion, mild heart swing, and IVC measurements supportive of low intravascular volume and hypovolemia.


Learners will also have the opportunity to visualize with ultrasound an endovascular stent, a pacemaker; diminished cardiac contractility, tachycardia, an indwelling Foley catheter; and a first-trimester intrauterine pregnancy.



Ordering Information

390-10052 Critical Care Bundle
Includes: 10 Critical Care Cases, 10 Critical Care LLEAP Scenarios.

SimCenter™
Visit www.laerdal.com/simcenter to learn how to optimize your simulation training using SimCenter.



SimStore™
Access to validated, standardized content from industry experts

SimManager™
A suite of online tools that allows you to fully optimize your entire simulation center operation

SimView™
A debriefing solution giving you the ability to study simulation events more closely

For more information, visit laerdal.com/UltrasoundSolution