

Resusci Anne QCPR & SimPad

Software Upgrade



Items Needed



PC



SimPad



Resusci Anne QCPR



USB cable - SimPad to RA QCPR



USB cable - PC to SimPad

Step 1


Go to www.laerdal.com and download latest version of SimPad software to your PC.

Note

These instructions are applicable for both SimPad and SimPad PLUS. Ensure you choose the appropriate product from the list on www.laerdal.com.

The collage consists of three screenshots from the Laerdal website:

- Top-left:** The 'Nursing Anne Simulator' page, featuring a photo of two nurses and the text 'Nursing & Patient Care' and 'Nursing Anne Simulator - Developed and built for nursing education, from basic assessment to all practices.' A 'Read more' button is visible.
- Middle:** The 'Product and Software Downloads' page. It includes a search bar, navigation tabs, and a list of software options:
 - Software: Demos, Full Versions and Updates (in: EXE & ZIP format)
 - Directions for Use (PDF) in PDF
 - Other product documentation
 Below the list is a green download icon and a note: 'Please note: Laerdal no longer supports software for Windows XP as Microsoft does not provide technical support or security updates for this operating system.'
- Bottom-right:** The 'Downloads for SimPad PLUS' page. It features a search bar and several download links:
 - Directions for Use:**
 - SIMPAD PLUS and LINK-BOX PLUS Important Product Information (11 MB - Multiple) 26/08/2017
 - How to Update SimPad PLUS Software (04 MB - Multiple) 06/07/2017
 - SimPad PLUS Quick Setup Guide Multilanguage (53 MB - Multiple) 26/08/2016
 - SimPad and SimPad PLUS Combined User Guide - Online (214 MB - English) 26/08/2016
 - Documents:**
 - SimPad PLUS Product Announcement (10 MB - English) 10/08/2016
 - Software:**
 - SimPagerViewer Software - 6.1.6.331 (101 KB) 26/08/2016



Latest software available

XXX MB
DD.MM.YYYY

Note

Make sure you download the latest software available, as the name may vary depending on the date for the upgrade.

Setup

Step 2

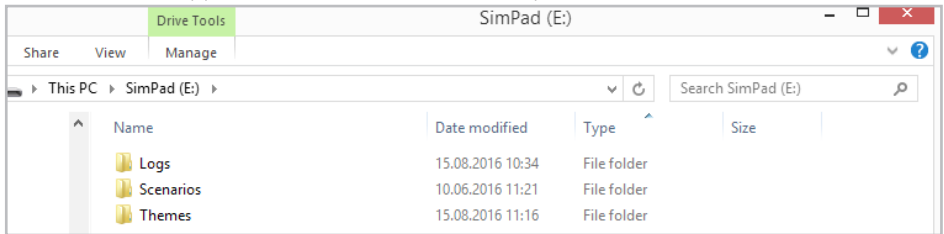
Connect SimPad to PC with USB cable.

 Note

Make sure that the unit has a battery capacity of at least 30% or is connected to the DC adapter.

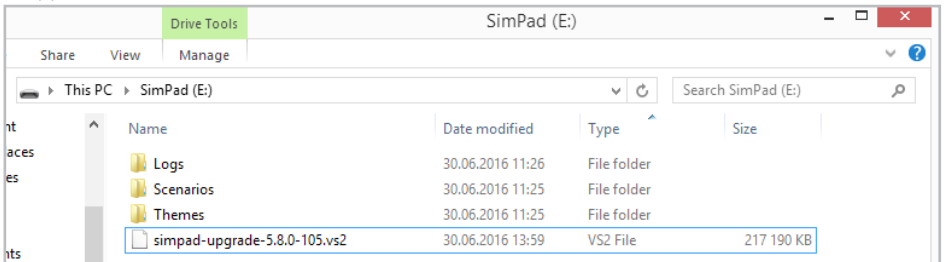


The SimPad will appear as a disk drive on the computer.



Step 3

Copy the downloaded software file to SimPad.



Step 4

Safely remove SimPad from PC.

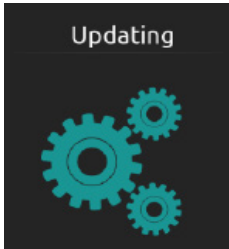
 Note

File names may vary depending on the product e.g. vs2 (SimPad) and .spu (SimPad PLUS).

Step 5

SimPad updating

The SimPad will now start updating and show "Updating" in the display and blink with the LED.



This update takes approx. 2 minutes.

When the SimPad Main screen re-appears, the upgrade is complete.

Step 6

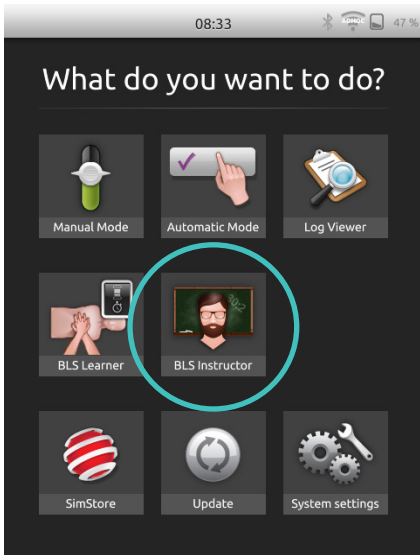
Connect SimPad to manikin.



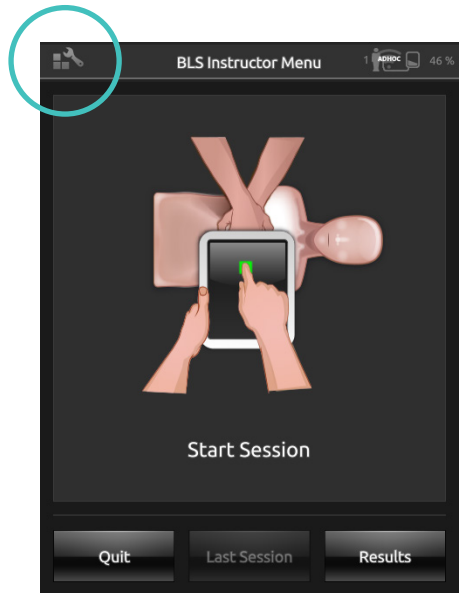
Setup

Step 7

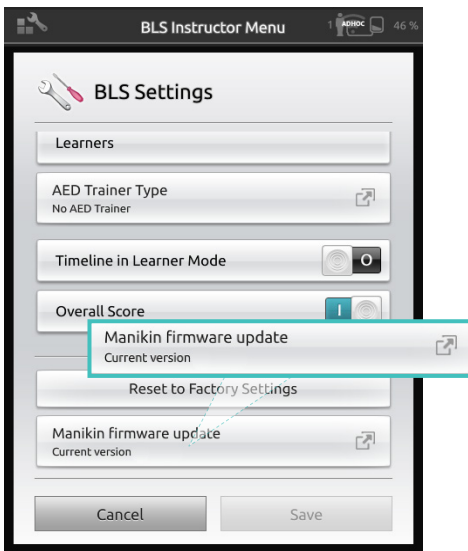
Update manikin firmware.



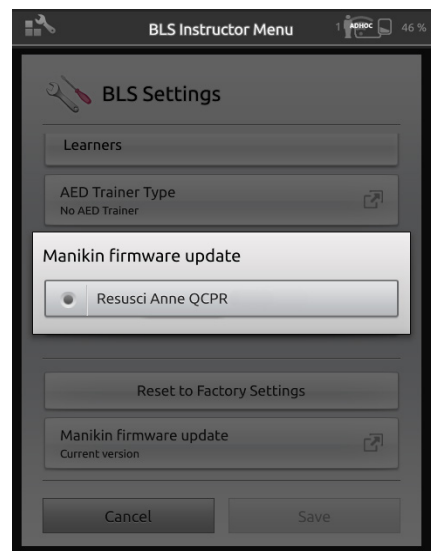
On SimPad, select BLS instructor app.



Open BLS settings in the top left corner.



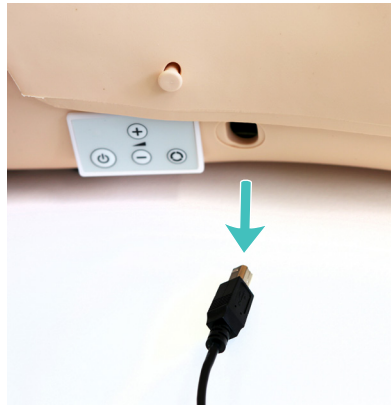
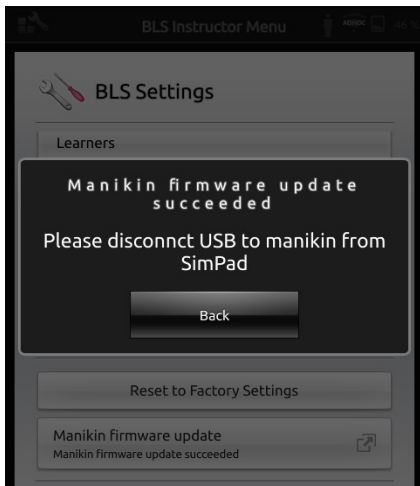
Scroll to the bottom and choose "manikin firmware update"



Choose the latest version and wait for the update to complete.

Step 8

Disconnect SimPad from manikin.



Step 9

Power on manikin.



Power on the Resusci Anne QCPR.

Step 10

Reconnect SimPad to manikin to validate the update.



SimPad and Resusci Anne QCPR are now both updated. Disconnect the cable and connect with Bluetooth to start training. Visit www.laerdal.com to download SimPad User Guide for further information.

© 2017 Laerdal Medical AS.
All rights reserved.

20-12758 Rev A

www.laerdal.com



Laerdal
helping save lives