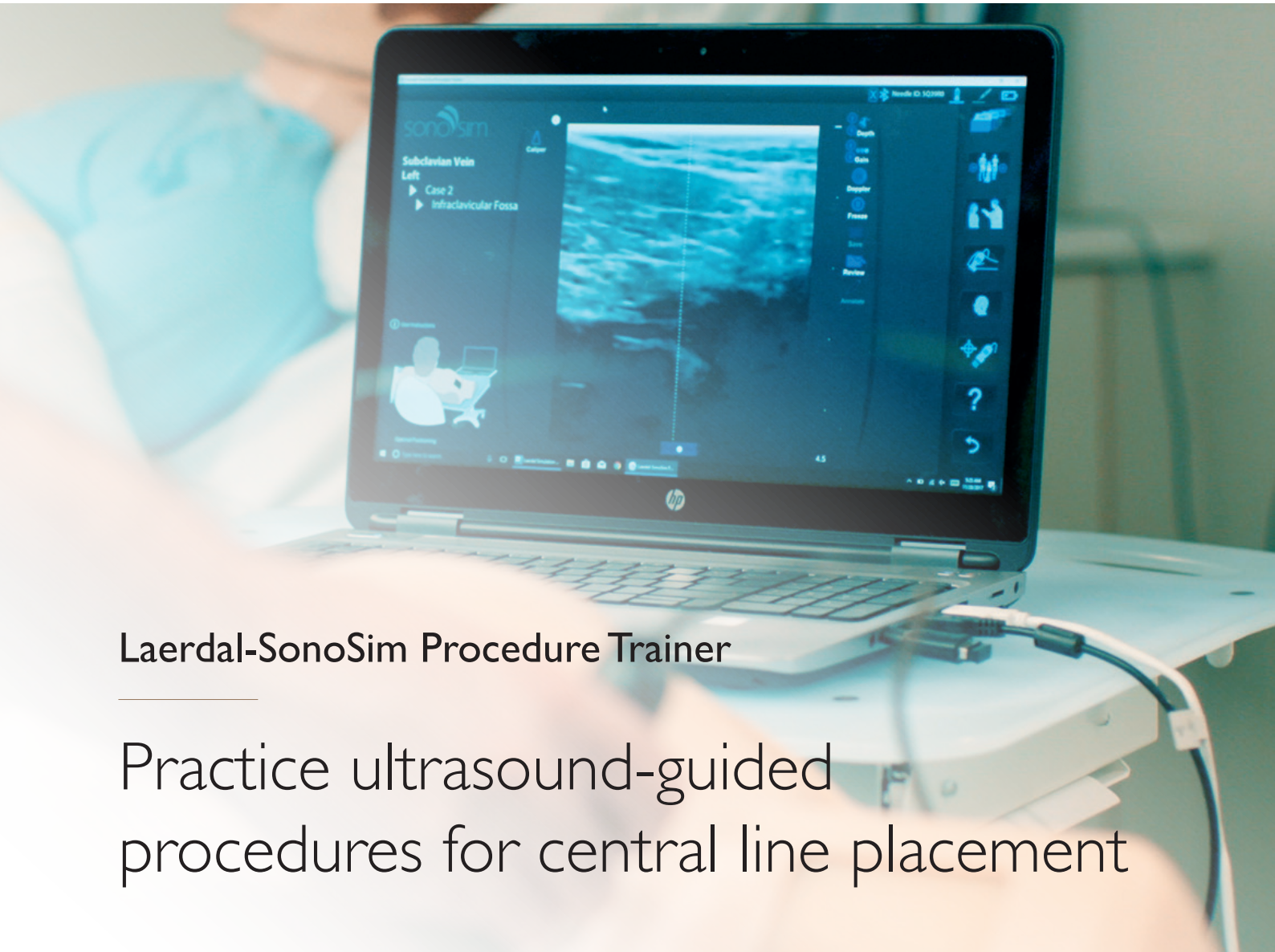




Laerdal
helping save lives

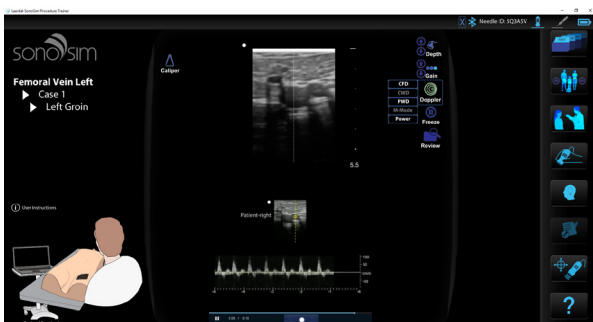
sonoSIM



Laerdal-SonoSim Procedure Trainer

Practice ultrasound-guided procedures for central line placement

Providing learners with an opportunity to practice using real ultrasound imagery in a safe yet realistic simulation environment, the Laerdal-SonoSim Procedure Trainer offers a unique training solution for ultrasound-guided needle procedure techniques for central line cannulation.



Develop and practice fundamental skills

SonoSim allows learners to develop fundamental psychomotor skills that are critical to performing successful ultrasound-guided needle procedures. Learners can train on a variety of body morphologies with access to expert guidance and real-time performance feedback.

Learners will be able to practice:

- Probe positioning and manipulation
- Identifying vasculature using Doppler modalities
- Compression

Easy, realistic, and safe training of needle tip tracking and manipulation

Needle tip tracking and manipulation can be practiced without an ultrasound machine or an in-person instructor; which provides for easy, accessible, and effective training.

Instructors can consistently and reliably train all learners to develop fundamental psychomotor skills in a safe, repeatable environment. Real patient anatomy and Doppler functionality provide all the benefits of practicing on real patients with none of the risks.

Scan real-patient cases in a safe, virtual ultrasound environment



Survey real vasculature and surrounding anatomy

Utilize Doppler modalities to identify the target vessel

Manipulate and track the needle tip to the target vessel

Key Features

Essential procedure skills

The Laerdal-SonoSim Procedure Trainer provides educators with the ability to train learners in necessary skills for performing successful ultrasound-guided procedures for central line placement. Learners can practice probe placement, vessel identification, and needle tip tracking and manipulation in a safe yet realistic simulation environment.

Skillbox

The patented SonoSim® Skillbox is included with each Laerdal-SonoSim Procedure Trainer. Featuring 5 ultrasound-guided procedure training cases, the SonoSim® Skillbox gives learners the opportunity to learn fundamental skills, such as probe orientation and manipulation, compression, and Doppler.

Real patient anatomy

The Laerdal-SonoSim Procedure Trainer provides learners the valuable opportunity to train on 20 real-patient ultrasound data sets at 6 different procedure sites: bilateral internal jugular veins, bilateral femoral veins, and bilateral subclavian veins. Learners will encounter realistic imaging landmarks and artifacts that will be a daily part of their procedures on real patients.

Versatility, durability, and ease of access

No ultrasound machines are needed to use the Laerdal-SonoSim Procedure and image quality will never degrade. One Laerdal-SonoSim Procedure Trainer provides training at 6 different central vein cannulation sites and is easily repeatable.

Automated expert instruction and guidance

The Laerdal-SonoSim Procedure Trainer provides learners with instant expert instruction and guidance before, during, and after the procedure. Findings videos narrated by an expert practitioner guide learners through procedural technique and major anatomical landmarks. If at any time during the procedure the learner needs extra assistance, guides can be accessed to show ideal probe placement. When the procedure is completed, learners are given detailed feedback.

Scalable platform

The Laerdal-SonoSim Procedure Trainer is designed to accommodate future ultrasound-guided procedure training cases. More cases can be added in the future via software upgrades without the need to purchase new equipment.

For more information,
visit www.laerdal.com/LSPT



Laerdal
helping save lives

Collaborating with leading partners

Through our partnership with SonoSim, a global leader in ultrasound training, Laerdal extends its ability to improve patient safety and help save more lives. Our solutions are simple to use, affordable and designed to maximise training impact.

