

AED Trainer2 Programming Kit

The programs on this CD will run on PCs with Windows 98/Me/NT/2000/XP operating system.

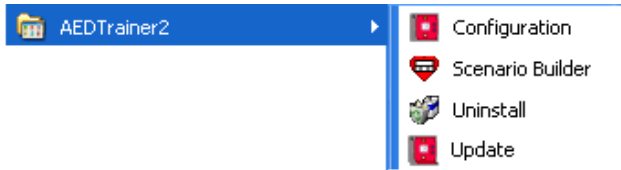
The CD contains the following programs:

- **Configuration.** Configuration program for AED Trainer2.
- **Update.** Program for updating the software in the AED Trainer2
Includes numerous language versions.
- **Scenario Builder.** Program for making custom scenarios for the AED Trainer2.

Installation.

Insert the CD-ROM into the computer. If your PC is set up for “Autorun” the installation program will start automatically. Otherwise run setup.exe and follow instructions.

The installation will create an “AED Trainer2” folder under “Programs” in your “Start menu” with the following items:



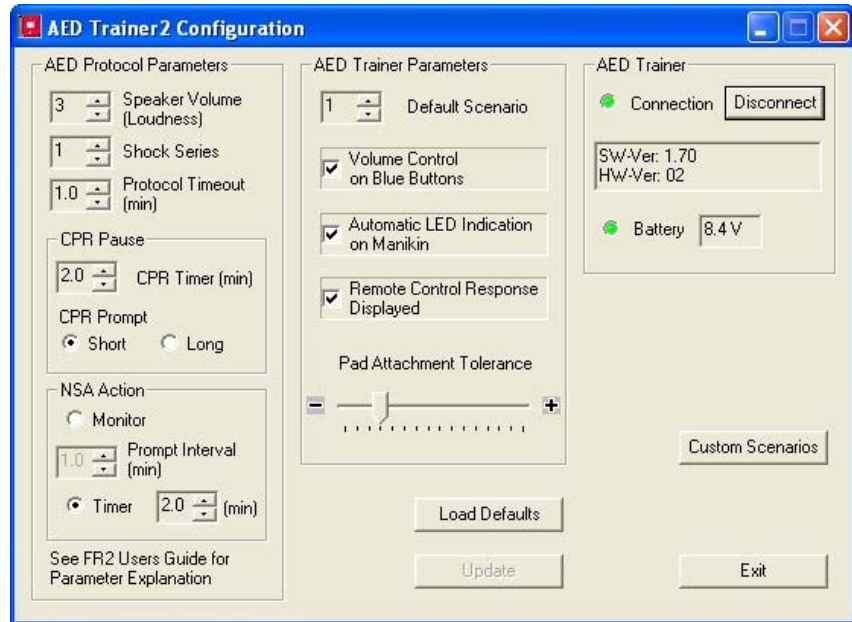
The Scenario Builder program requires Java Virtual Machine to be installed on your computer. This will be installed as part of this installation.

AED Trainer2 Configuration

Startup

1. Connect the AED Trainer2 to one of the COM-ports on the PC using the cable included with the programming kit.
2. Start the Configuration program.
3. Turn on the AED Trainer2
4. Click the “Connect” button.
The program will connect to the AED Trainer2, and display the current setting of the unit.

Note: If you are using an USB to Serial adapter, the Configuration program will search serial ports COM1 through COM16 to find the AED Trainer2. This may take a few seconds.

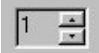
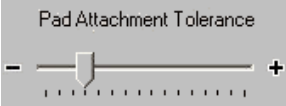





Notice that the capacity of the AED Trainer2 batteries can be checked in the configuration program. If the battery indicator is yellow or red, the batteries should be replaced.

AED Protocol Parameters

These parameters are identical to setup parameters in the HeartStart FR2+ AED. See the Setup chapter in the FR2+ users guide for further explanations.

AED Trainer Parameters

Parameter	Description	Default
 Default Scenario	Sets the scenario that will be started when the AED Trainer2 turns on. (1..10, C1..C3) The scenario can also be selected on the unit or with the remote control. See AED Trainer2 Directions For Use.	Scenario #1
 Pad Attachment Tolerance	Adjusts the threshold for acceptable correct pad placement on an AED Training System manikin. Lower sensitivity requires more accurate pad placement.	

Parameter	When checked	When un-checked	Default
 Volume Control on Blue Buttons	Speaker volume can be adjusted using the two blue buttons on the AED Trainer2.	The blue buttons are inoperative during normal operation. Speaker volume can still be adjusted using the remote control	Checked
 Automatic LED Indication on Manikin	The AED Training System manikin will automatically illuminate the electrode pad LEDs in the manikin chest skin when the pads are first attached.	The LEDs in the manikin chest skin may only be illuminated using the remote control	Checked
 Remote Control Response Displayed	The AED Trainer2 will display a response in the 2-digit display when a command from the remote control is received. See AED Trainer2 Directions For Use.	Only the leftmost decimal point in the display indicates reception of commands from remote control .	Checked

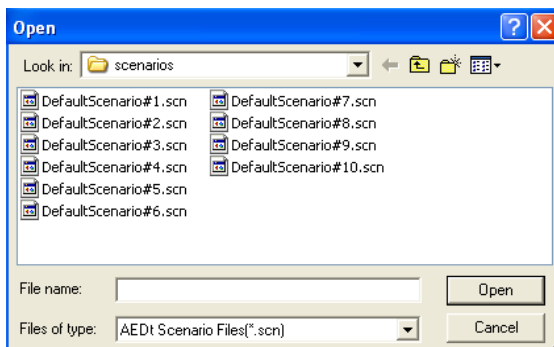
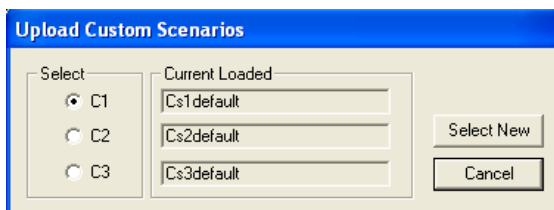
Load Defaults uploads the default settings to the AED Trainer2. These are guidelines 2005 compliant settings. Shock Series = 1, CPR Pause = 2.0 min, CPR Prompt = Short, NSA Action = Timer 2.0 min.

Update uploads the new settings to the AED Trainer2.

Custom Scenarios.

Allows uploading of custom scenarios, made by the Scenario Builder, to the AED Trainer2.

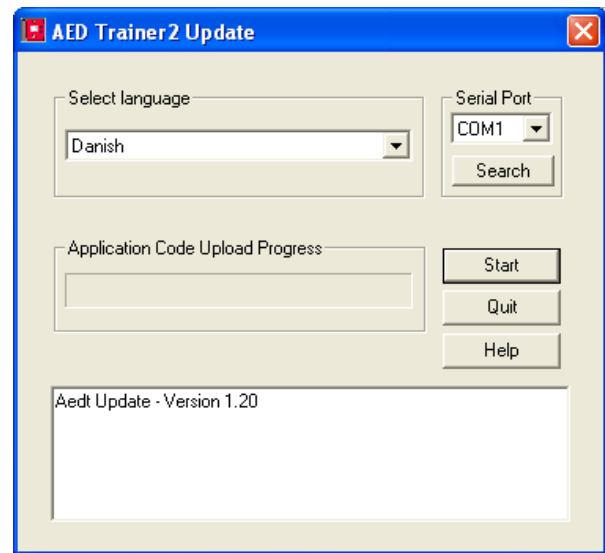
1. Select which scenario to replace. (C1 – C3). The screen shows the names of the currently loaded scenarios.
2. Click “Select New” and select a scenario from the list.
3. Click “Open”, and the selected scenario will be uploaded to the AED Trainer2.



AED Trainer2 Update

Make sure that the AED Trainer 2 has adequate battery capacity before programming is performed. Battery capacity can be checked using the Configuration program.

1. Connect the AED Trainer2 to one of the COM-ports on the PC using the cable included in the programming kit.
2. Start the Update program.
3. Turn on the AED Trainer2.
4. Select COM port
Click on the “Search” button if you are using an USB to Serial adapter or if you are unsure what serial port the unit is connected to. “Search” will search for the AED Trainer2 on COM 1 through COM 16. This may take a few seconds
5. Select language.
6. Click “Start” to start programming. The programming takes about 2 minutes.



Scenario Builder

The Scenario Builder allows for building custom scenarios that can be uploaded to the AED Trainer2.

1. Start the scenario builder.
2. Consult the Help function in the Scenario Builder on how to build scenarios.
3. Save the scenario.
4. Start the Configuration program and upload the scenario to one of the three custom scenarios in the AED Trainer2

